

# Relationships

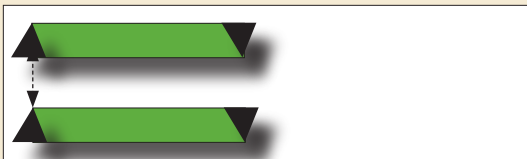
## Relationships

**R**elationships indicate an interdependency between activities. Thus, a relationship is a link used to create a sequence of events. The conventional relationship (**Finish-to-Start**) indicates that a successor activity can start only

after its predecessor finishes. For example, in a conventional relationship you cannot erect an exterior wall until the footing is poured. Since most relationships in a project are Finish-to-Start, P3 provides a feature called **“Autolink”** that automatically assigns Finish-to-Start relationships to activities as you add them.

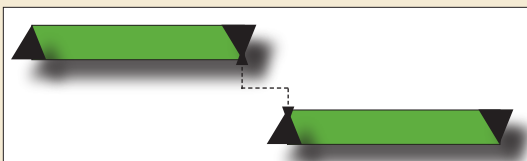
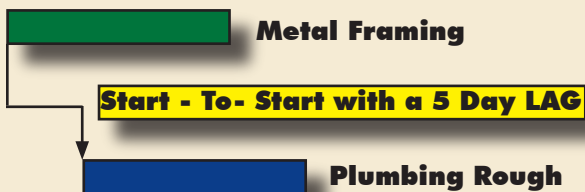
### (4) Types of Relationships

There are (4) types of relationships that can be used to create a link between activities.



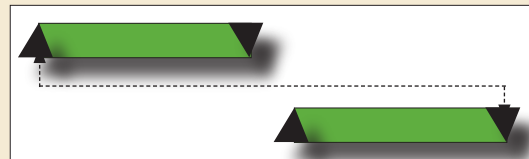
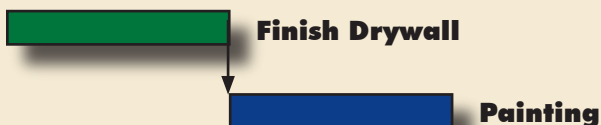
#### ① • Start-To-Start

A relationship between activities in which the start of a successor activity depends on the start of its predecessor.



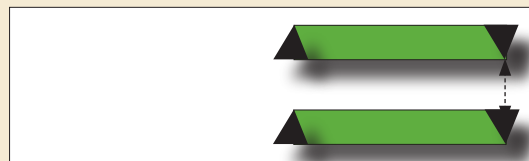
#### ③ • Finish-To-Start

A relationship in which the start of the successor depends on the completion of its predecessor activity.



#### ② • Start-To-Finish

A relationship between activities in which the successor activity cannot complete until its predecessor activity starts.



#### ④ • Finish-To-Finish

A relationship in which the finish of a successor activity depends on the finish of the predecessor activity.

